

WESTSIDE CHOICE

NEIGHBORHOOD
TASK FORCE
UPDATE

1.16.2025





Mattie Rhodes Cultural Center,
Kansas City, Missouri

AGENDA

Westside Neighborhood Association Update

- 1. What we've been up to**
- 2. West Bluff Housing Development Concept Update**
- 3. Neighborhood Plan Draft Goals and Strategies**

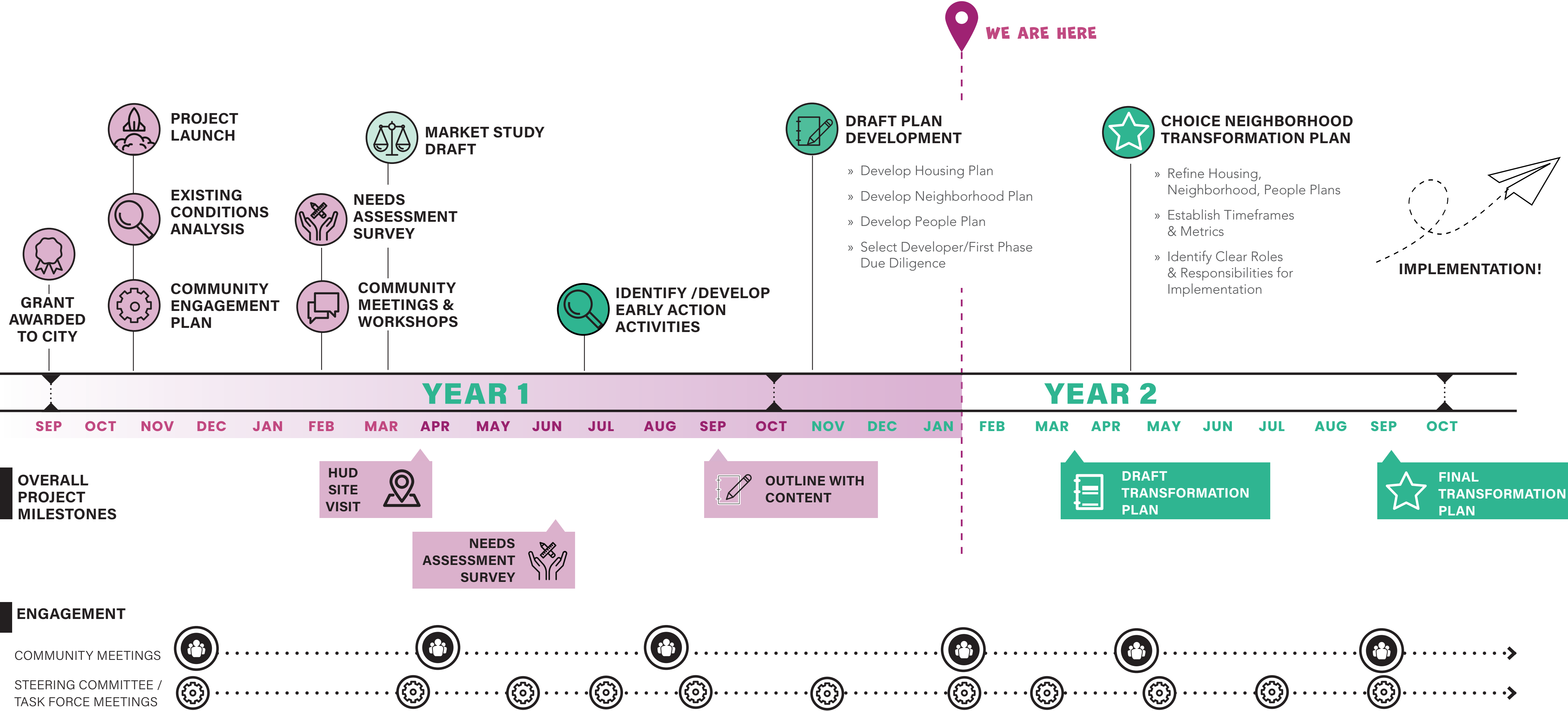
01

WHAT HAVE WE
BEEN UP TO?



Steps to Gage Park, Avenida Cesar Chavez
Kansas City, Missouri

TIMELINE



THEMES

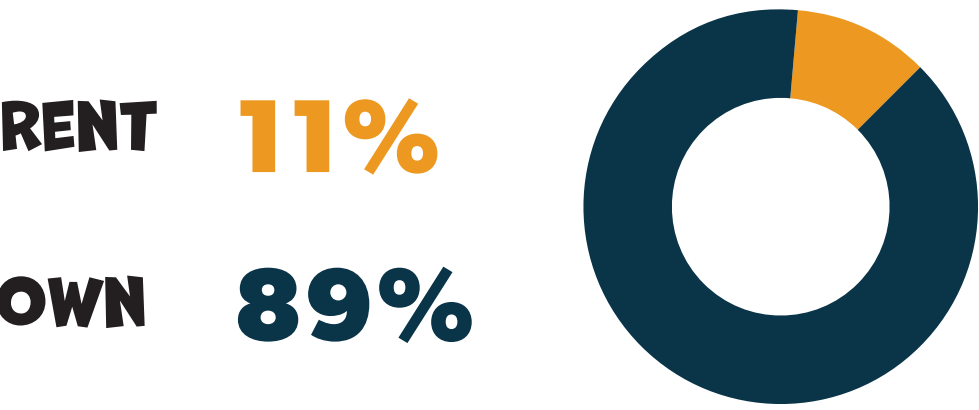
Westside Neighborhood Residents

West Bluff Residents

THEME: LONG-TIME WESTSIDERS

Respondents to the neighborhood survey were overwhelmingly **homeowners**, with **full-time employment**. Additionally **50%** of respondents indicated **living in the neighborhood 10+ years**. While West Bluff is a rental community, with a less than 50% employment rate **almost 40% of residents** who completed the survey have **lived in West Bluff 10+ years**.

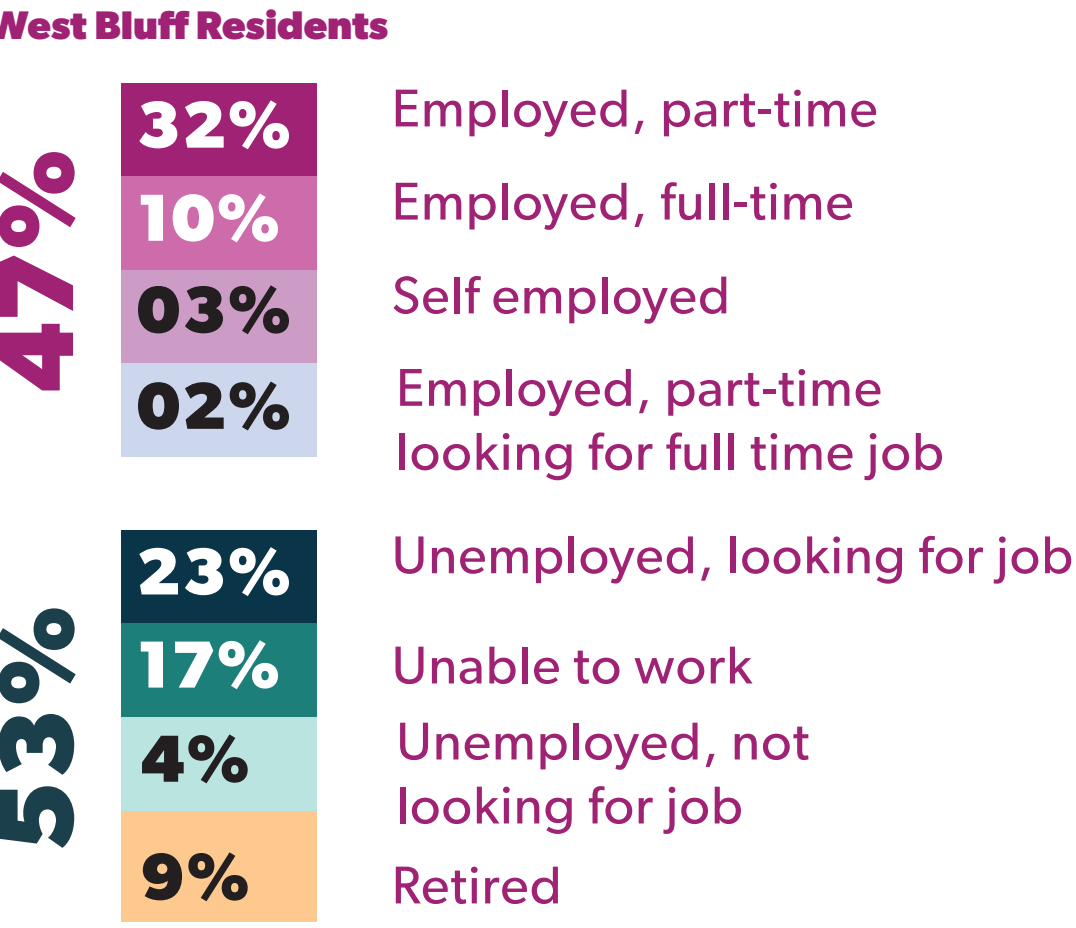
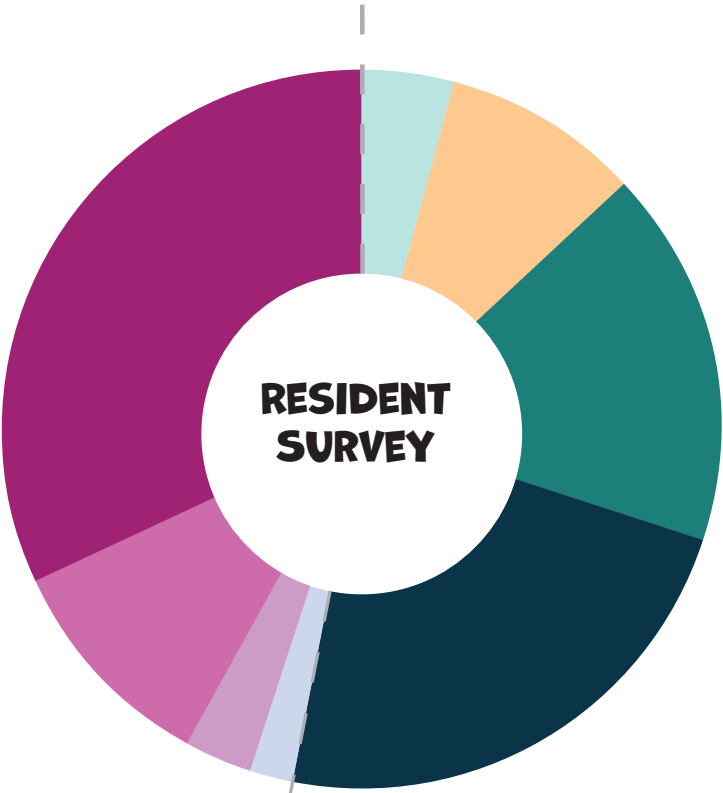
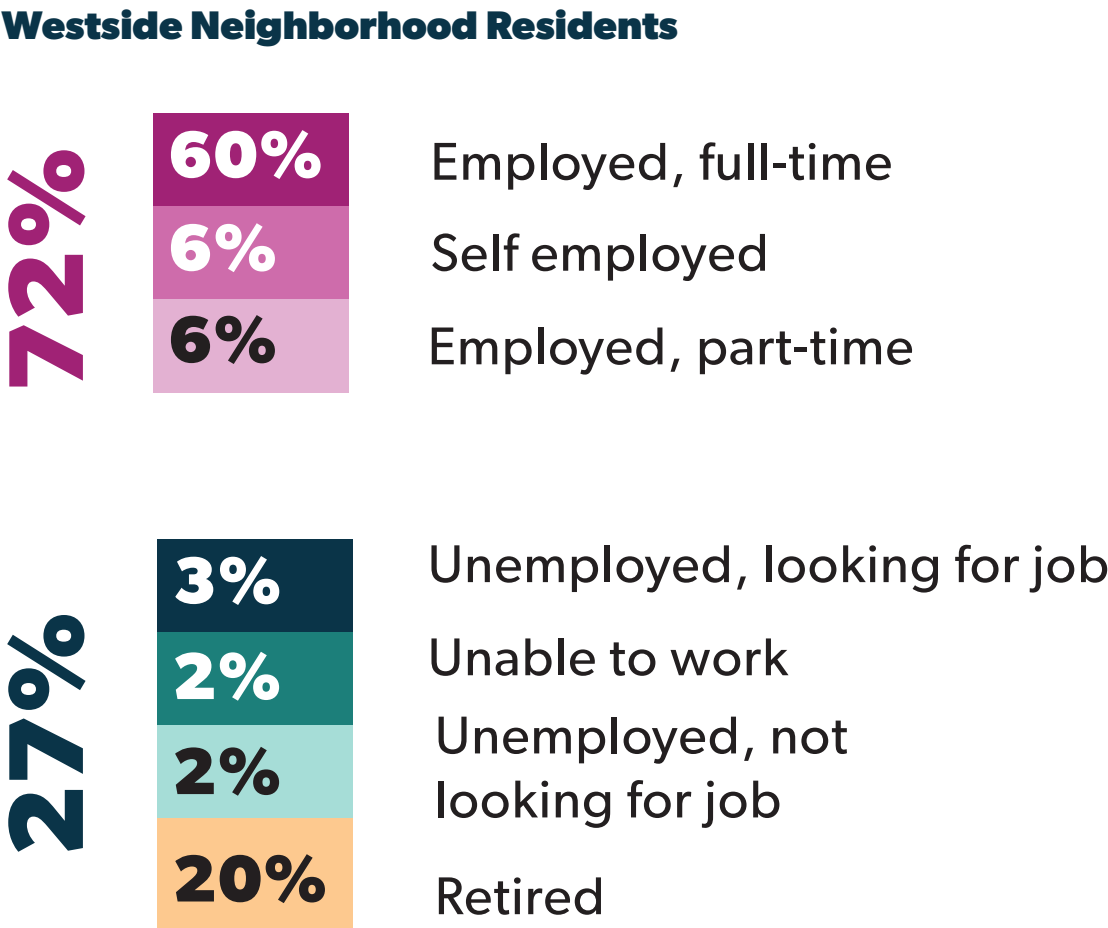
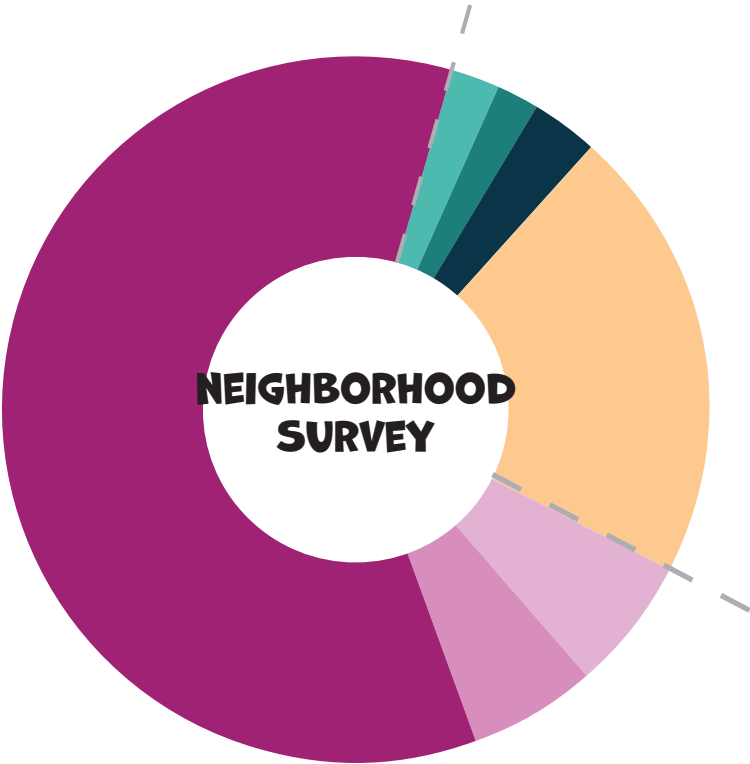
DO YOU RENT OR OWN YOUR HOME:



HOW LONG HAVE YOU LIVED IN THE NEIGHBORHOOD?



CURRENT EMPLOYMENT STATUS OF SURVEY PARTICIPANTS



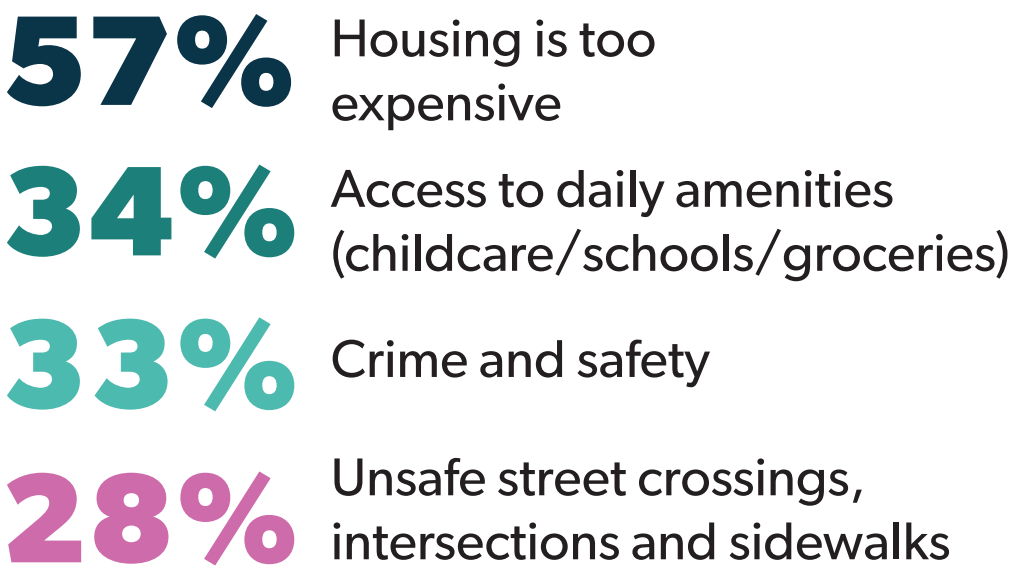
THEMES

THEME: CLEAR STRENGTHS, DIFFERENT CHALLENGES

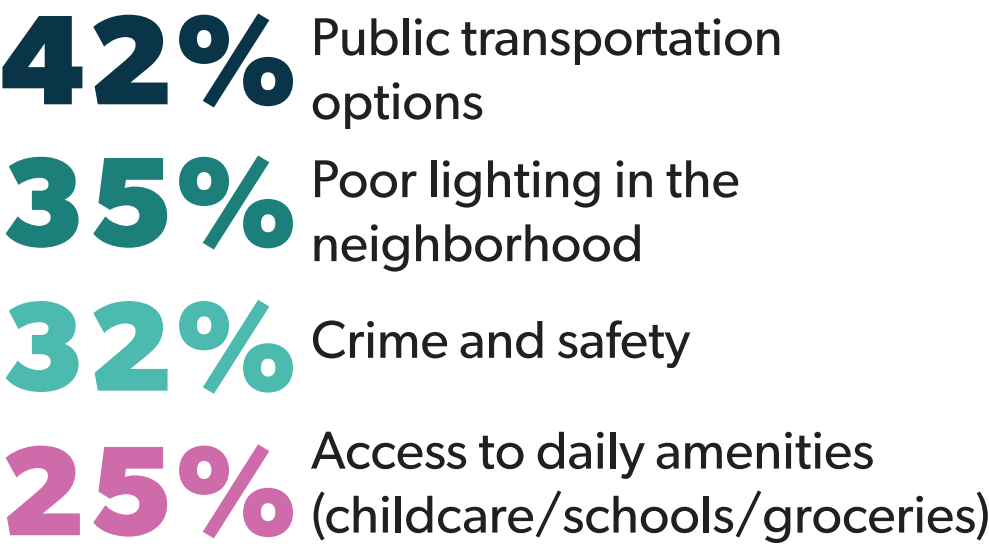
respondents to the neighborhood and resident survey both identified **Location**, **Community**, and **Culture** as the **Westside's** greatest strengths.

WHAT DO YOU THINK ARE WESTSIDE'S BIGGEST CHALLENGES?

Westside Neighborhood Residents



West Bluff Residents



West Bluff residents prioritized access related issues like **transportation and lighting**, while neighborhood respondents prioritized **housing affordability** more than any other issue.

Westside Neighborhood Residents

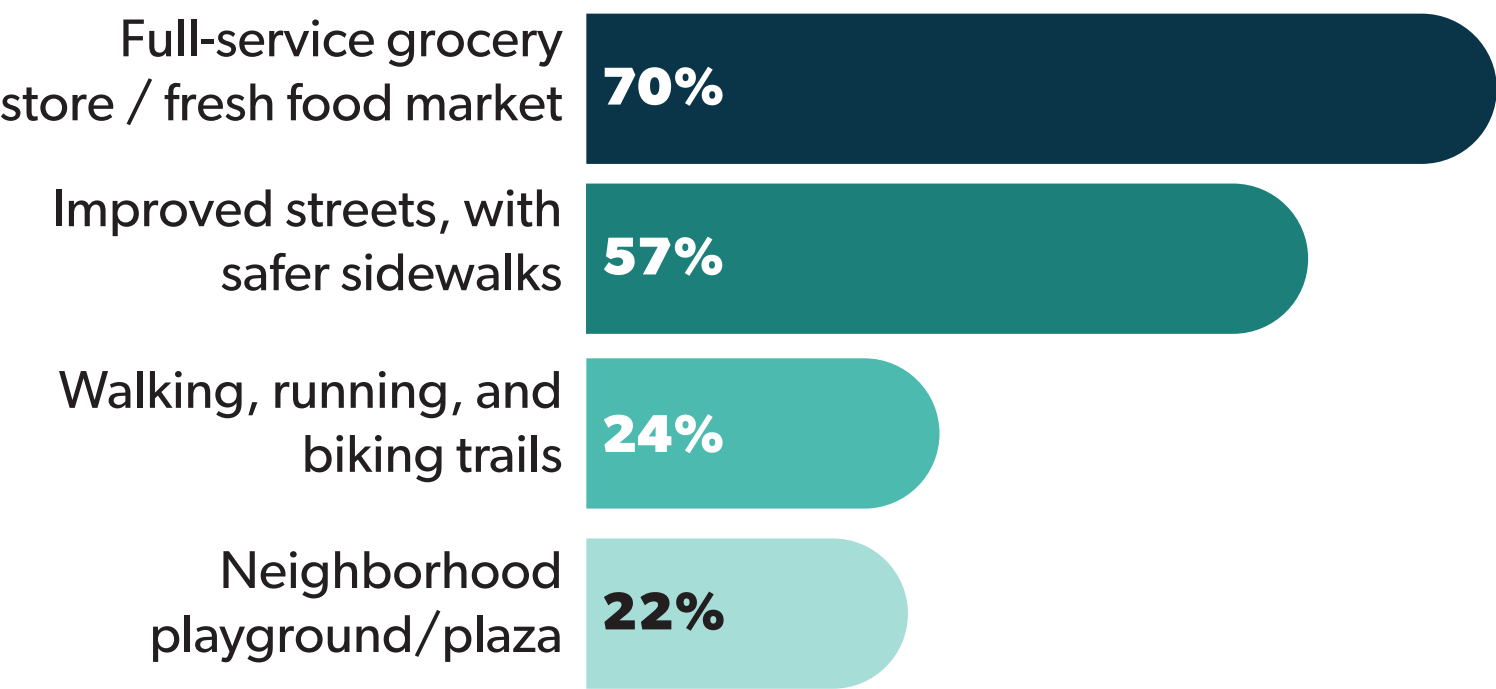
West Bluff Residents

THEME: A NEED FOR AFFORDABLE GROCERY AND FRESH FOOD MARKETS

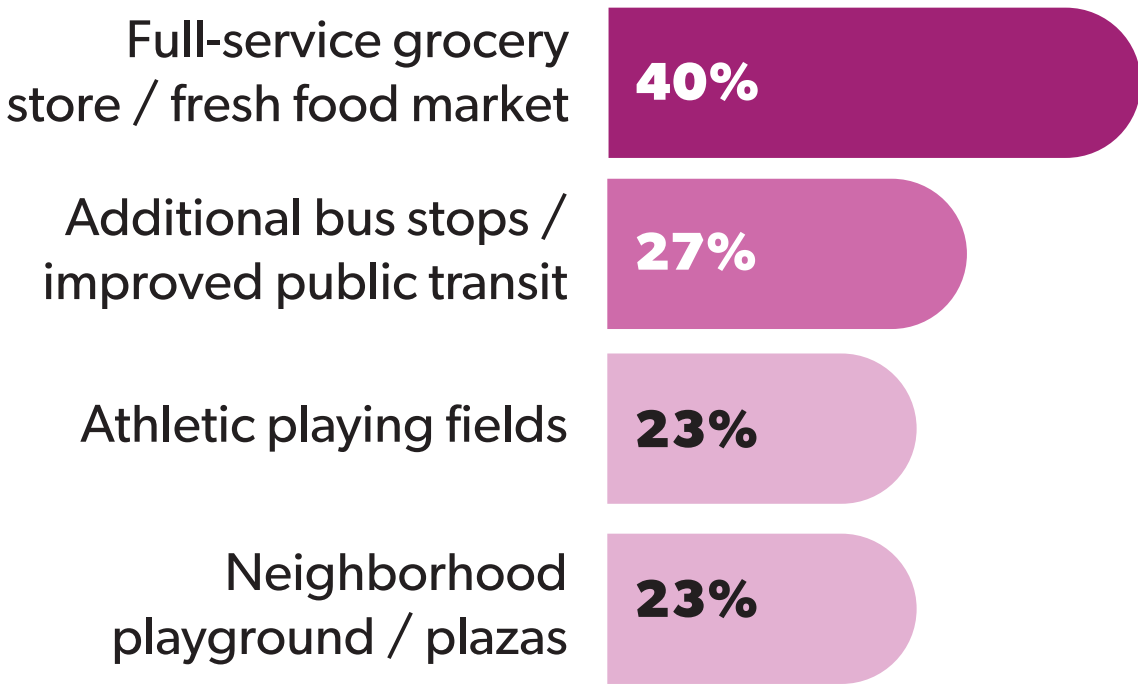
Respondents to the neighborhood survey the resident survey emphasized the need for **grocery and fresh food markets**. When exploring the food insecurity and the most frequented grocery stores by residents, **cost as well as location** are major factors in overall accessibility.

WHICH OF THE FOLLOWING DO YOU THINK COULD IMPROVE THE NEIGHBORHOOD?

Westside Neighborhood Residents

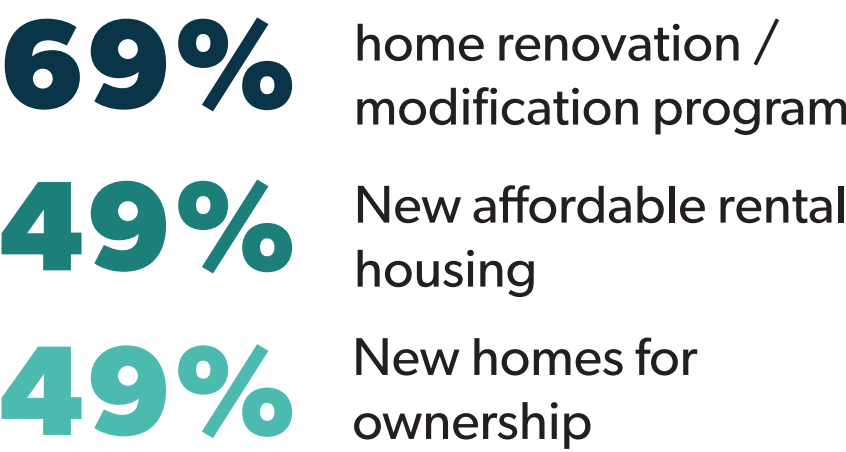


West Bluff Residents



WHAT TYPE OF HOUSING IS NEEDED IN THE NEIGHBORHOOD?

Westside Neighborhood Residents



RATE THE HEALTH OF THE NEIGHBORHOOD:

High-quality fresh fruits, vegetables and food are widely available and affordable

Westside Neighborhood Residents



West Bluff Residents



THEMES

Westside Neighborhood Residents

West Bluff Residents

THEME: QUALITY OF LIFE FOR YOUTH

The priorities of resident and neighborhood survey respondents around issues facing youth highlight the importance of **meeting immediate needs** and providing a high quality of life for youth in the neighborhood.

WHAT DO YOU FEEL IS THE MOST PRESSING ISSUE FACING YOUTH IN THE NEIGHBORHOOD TODAY?

Westside Neighborhood Residents

Community Belonging

Access to High Quality Education

Safety and violence

West Bluff Residents

Community Belonging

Access to High Quality Education

Safety and Violence

Mental health and Trauma

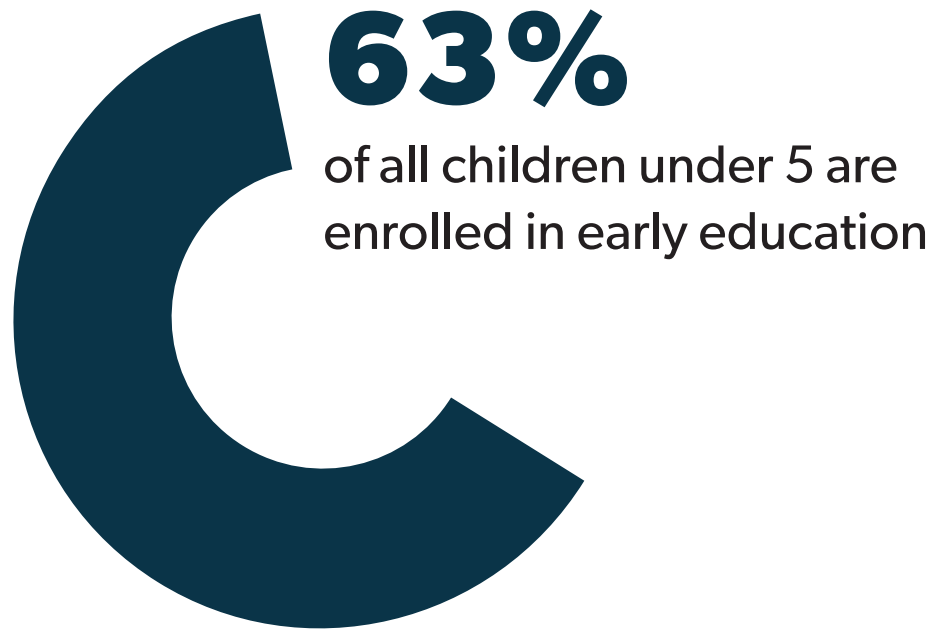
THEME: COST & CONVENIENCE OF CHILDCARE

According to survey respondents nearly **1/3 of eligible children are not enrolled** in an early childhood program. **Cost and convenience** (location, schedule) are the biggest barriers to enrollment.

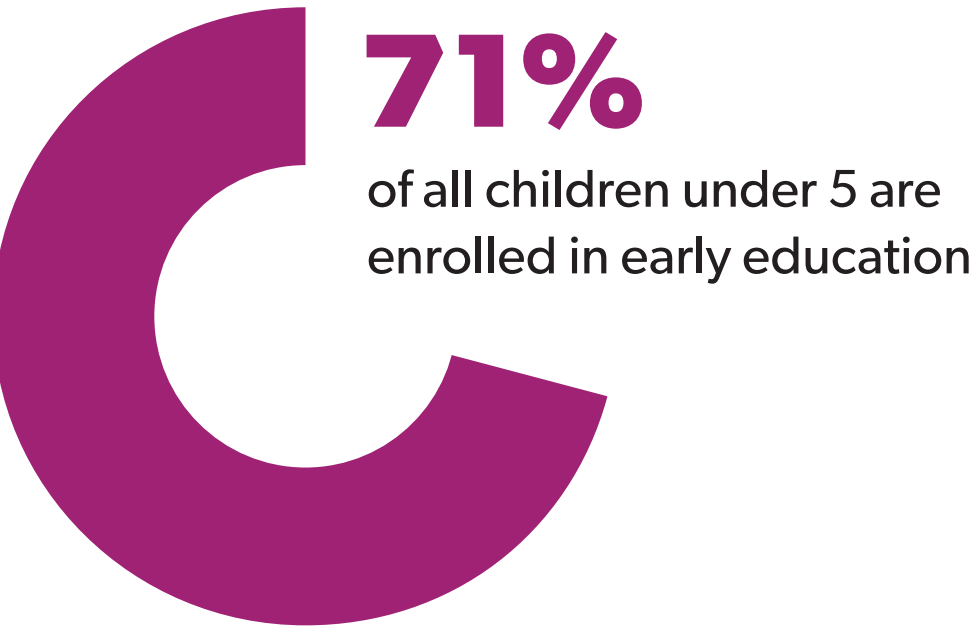
CHILDREN (0-5 YEARS) ENROLLMENT STATUS

Enrolled

Westside Neighborhood Residents



West Bluff Residents



IF THE CHILDREN IN YOUR HOUSEHOLD DO NOT ATTEND EARLY EDUCATION PROGRAM, WHAT ARE SOME OF THE REASONS?

Westside Neighborhood Residents

- 1 Cost
- 2 Location
- 3 Quality

71% of neighborhood respondents identified **cost** as the main deterrent to enrollment.

West Bluff Residents

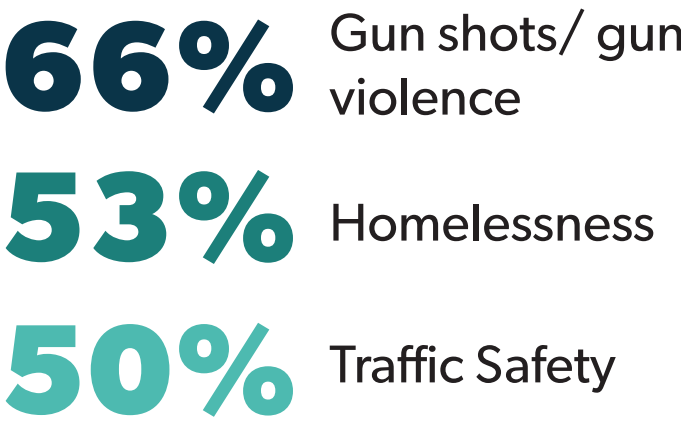
- 1 Scheduling conflicts
- 2 Cost
- 3 Openings
- 4 Quality
- 5 Location

WESTSIDE CHOICE

THEMES

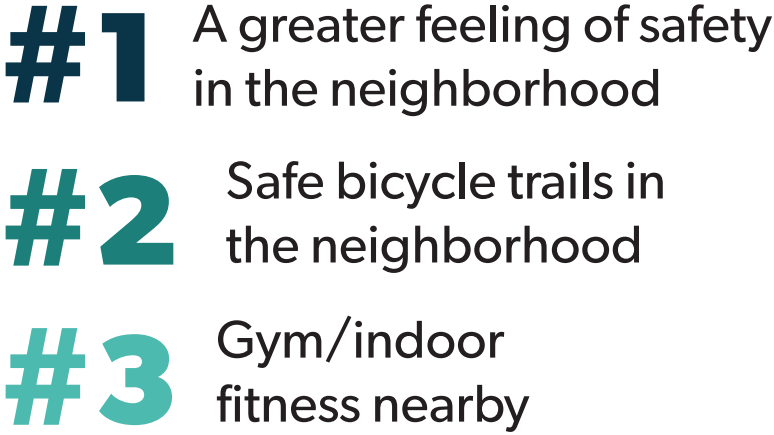
TOP SAFETY CONCERNS?

Westside Neighborhood Residents



WHAT WOULD MAKE IT EASIER TO EXERCISE IN THE NEIGHBORHOOD?

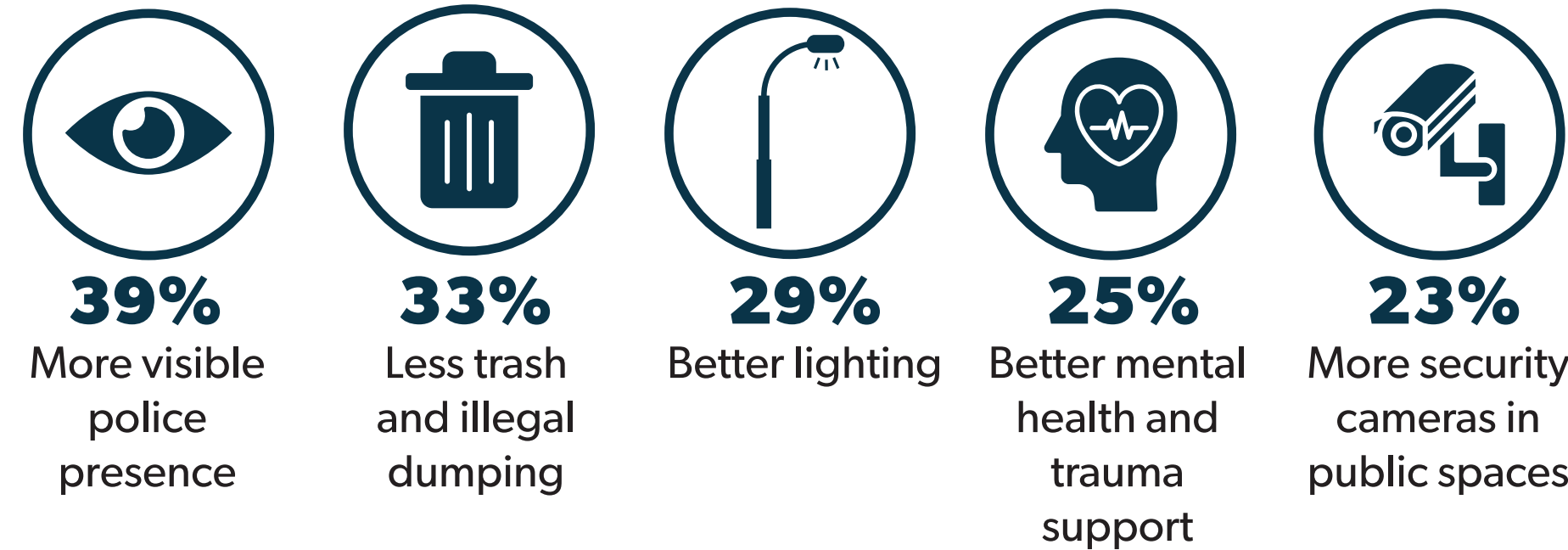
Westside Neighborhood Residents



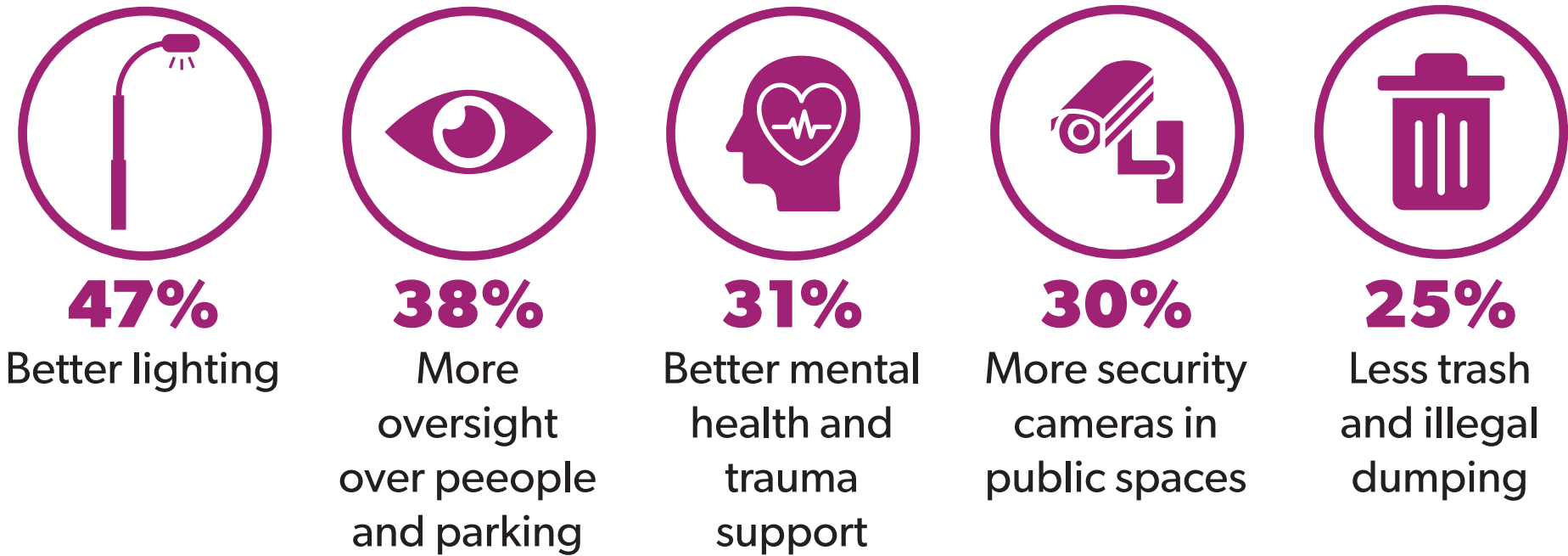
71% of neighborhood survey respondents indicated the **"Feel safe in Westside"**, however only **17%** feel **"there is enough police presence on foot or bike in the neighborhood"**.

WHAT ARE SOME THINGS THAT WOULD MAKE YOUR NEIGHBORHOOD FEEL SAFER TO YOU?

Westside Neighborhood Residents



West Bluff Residents



Westside Neighborhood Residents

West Bluff Residents

USAGE OF PARKS:

West Bluff Residents

Westside Neighborhood Residents

Playgrounds at West Bluff



Gage Park (overlooking Cesar Chavez Ave – 23rd St.)



Observation Park (W. 20th St. & Holly St)



West Pennway Boulevard



Jarboe Park (1636 Jarboe St)

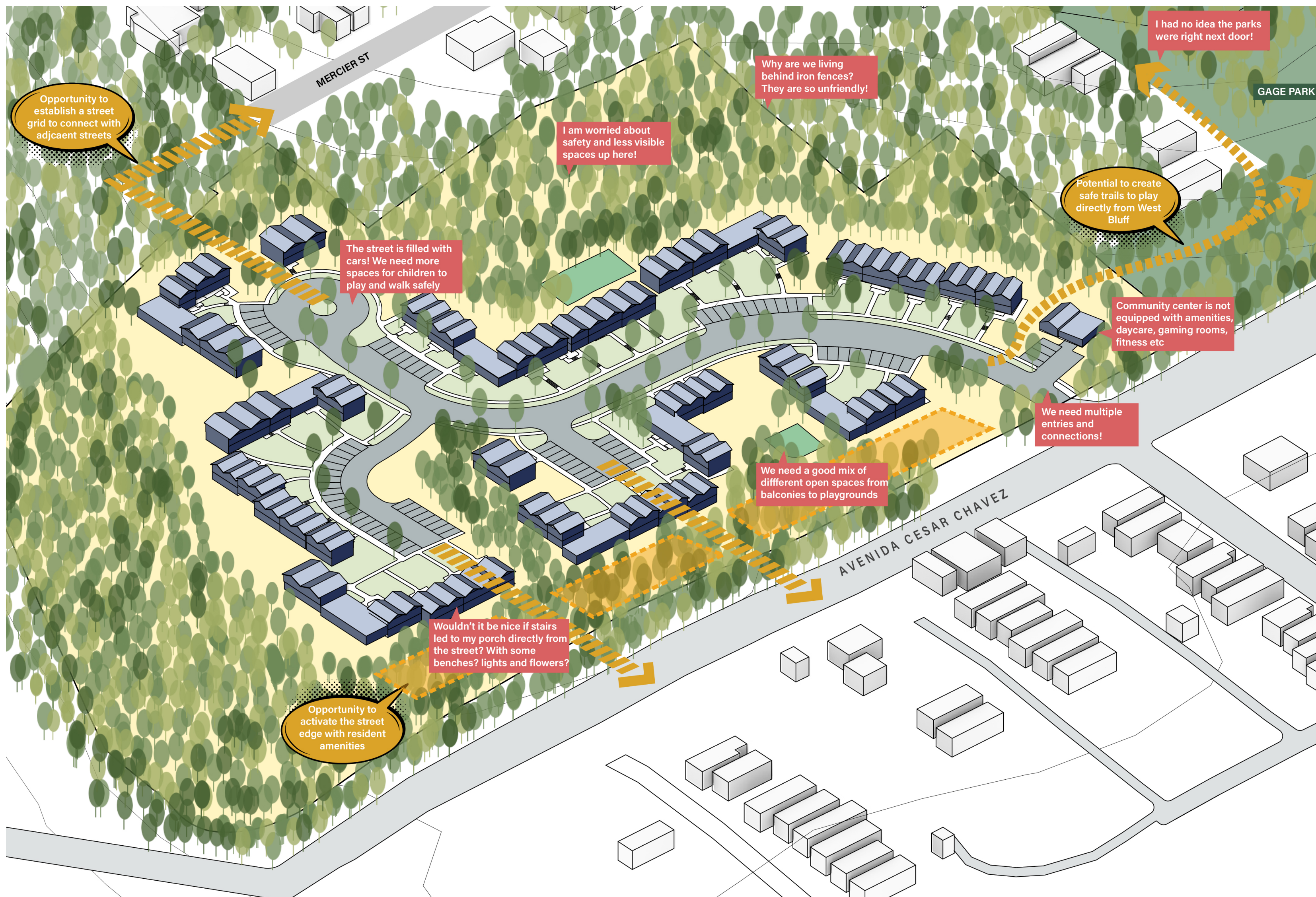


02

HOUSING PLAN DISCUSSION

West Bluff Townhomes, KC

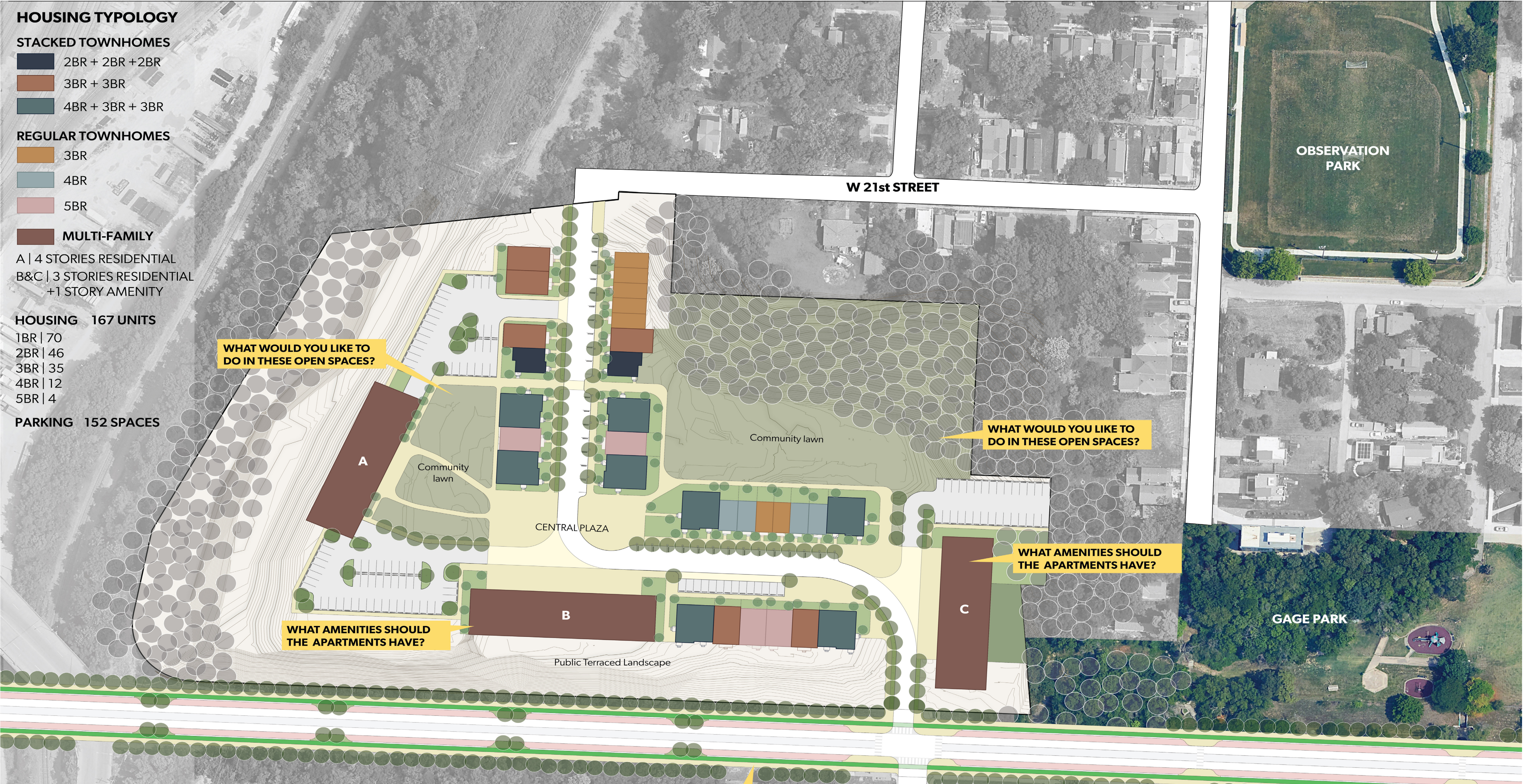
WRT



GUIDING PRINCIPLES

- Activate the street edge of the housing development with resident amenities
- Connect West Bluff with its adjacencies through multiple access points
- Prioritize children and pedestrian safety within West Bluff by creating safer spaces to walk and play with limited car visibility
- Create trails and connections to existing parks around West Bluff
- Programmed open spaces to avoid crime and unsafe conditions

WEST BLUFF SITE CONCEPT

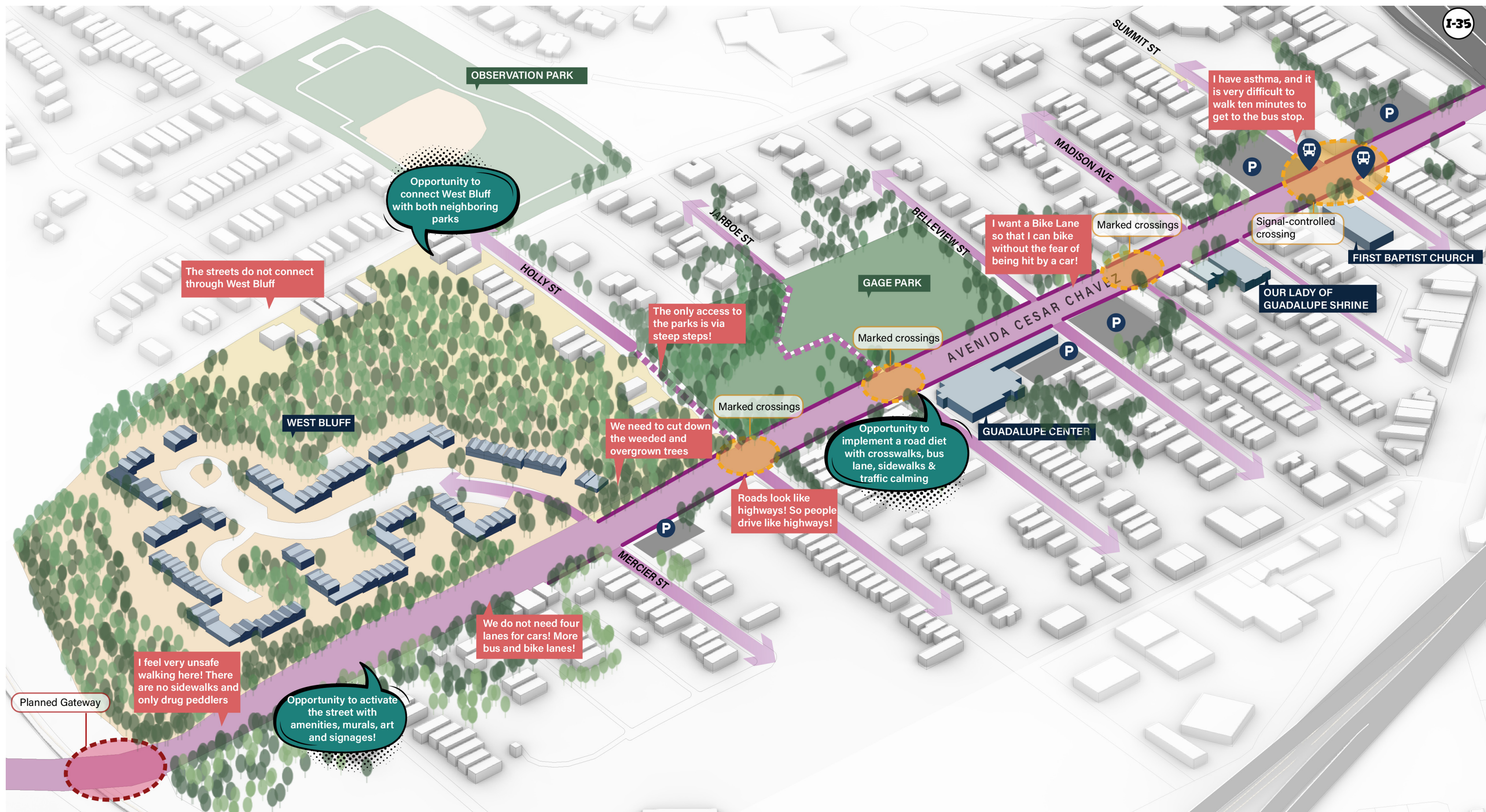


03

NEIGHBORHOOD PLAN DISCUSSION



Mattie Rhodes Community Center, Westside Choice Neighborhood | WRT
Kansas City, Missouri



GUIDING PRINCIPLES

- Align with the City's efforts to establish West Bluff as a Planned Gateway into the neighborhood, city and state.
- Implement a Road diet for Cesar Chavez to include bus and bike lanes, with traffic calming measures and improved pedestrian safety.
- Improve access to Gage and Observation Parks.
- Develop under-utilized and vacant lots along Cesar Chavez to establish the corridor as a safe and welcoming spine of the neighborhood.
- Celebrate Westside's culture, art, community and heritage.

GOAL 1: CELEBRATING COMMUNITY

Create stronger connections and sense of place in the Westside neighborhood for residents of West Bluff, celebrating and building on the community’s history and culture, and neighborhood pride.

- 1 Develop a public art/murals tour that includes opportunities for historical markers, wayfinding and cultural interpretation for the Westside
- 2 Create a Neighborhood Directory for Westside resources, partners, and organizations.
- 3 Expand West Bluff involvement in the WS Connections meetings hosted by Mattie Rhodes.

WHAT WE'VE HEARD SO FAR...

WHAT DO YOU THINK ARE WESTSIDE'S GREATEST STRENGTHS?

West Bluff residents

1

Location

Location / Ease of getting to Downtown and region

2

Community

People / Neighbors / Community

3

Culture

History / Art / Culture

Westside residents

1

Community

People / Neighbors / Community

2

Location

Location / Ease of getting to Downtown and region

3

Culture

History / Art / Culture

GOAL 2: GATEWAY

Establish West Bluff as a gateway to the neighborhood and city of Kansas City, MO.

- 1 Revitalize Cesar Chavez as an important neighborhood corridor, with complete street, lighting, implemented road diet, safe crossings and sidewalks
- 2 Develop a wayfinding strategy to incorporate "Welcome to Westside" signs/ murals at the gateway.
- 3 Improve safety and mobility by investing in planning and implementation for key pedestrian crossings and accessibility improvements

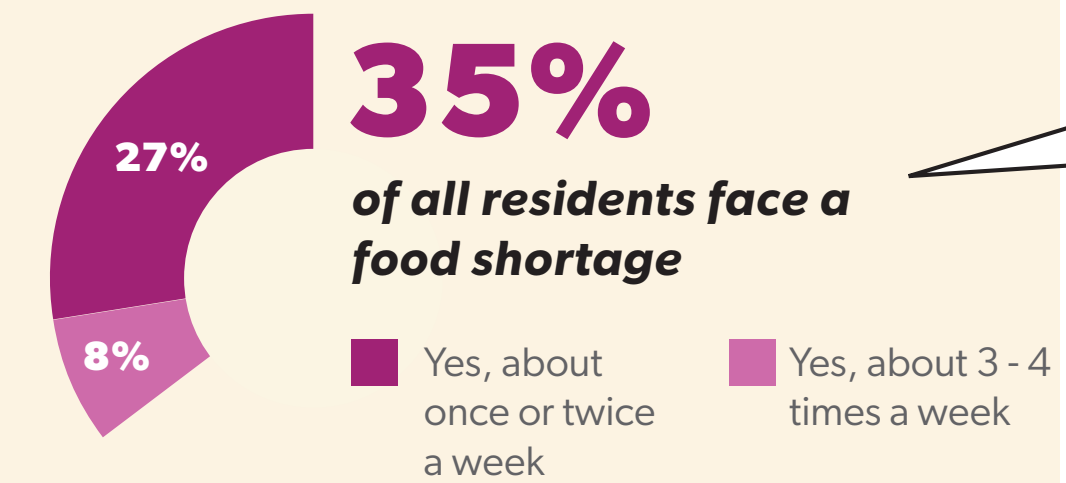


GOAL 3: FRESH FOOD ACCESS

Increase convenient, accessible access to high-quality, affordable, healthy food options.

- 1 Expand KC Fresh Rx; Consider direct fresh food market to West Bluff residents; hold a Westside weekend farmers market/vendor market with affordable options
- 2 Attract a grocery store/market/produce at a convenient location for Westside residents
- 3 Consider vacant lots for urban gardening programming if they can be maintained by neighbors or community organizations in sponsorship
- 4 Consider community garden integration at Gage Park, adjacent to West Bluff Townhomes, which has existing water line access.
- 5 Develop a weekend shuttle/van option for public transportation to River Market, or shuttle to light rail on Main Street

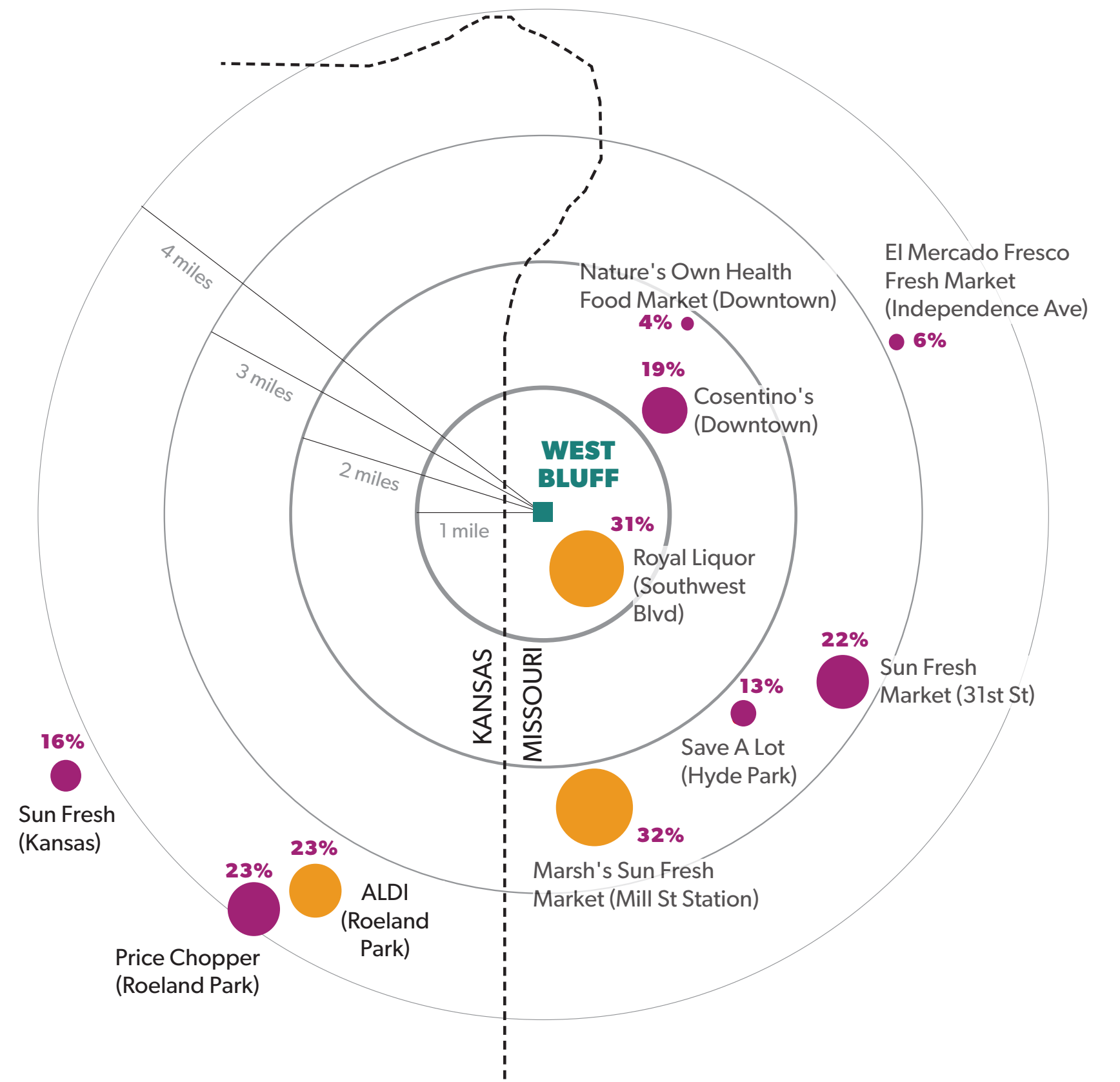
DURING A REGULAR WEEK, ARE THERE TIMES THAT YOU FIND THERE IS NOT ENOUGH FOOD TO EAT IN YOUR HOUSEHOLD?



- 1 **Cost of food**
 - 2 **Accessibility to the store**
- are the major reasons why residents do not have enough food to eat at home.

WHERE DO YOU TYPICALLY GO TO DO YOUR GROCERY AND BASIC SHOPPING NEEDS?

- #1 Marsh's Sun Fresh Market (Mill St Station)
- #2 Royal Liquor
- #3 ALDI (Roeland Park)



GOAL 4: WESTSIDE CONNECTIVITY

Build on existing plans (e.g., Greater Downtown, West Pennway and Southwest Boulevard) to re-establish connectivity to different parts of the neighborhood.

- 1 Work with KCATA to extend bus service access closer to West Bluff along Cesar Chavez, with a bus shelter with seating/signage. (Closest current stop is 25th and SW Blvd)
- 2 Increase use and awareness of KC's app-based, on-demand transit service, IRIS, for Westside residents. (Opportunity to pilot more accessibility in Westside)

WHAT WE'VE HEARD SO FAR..

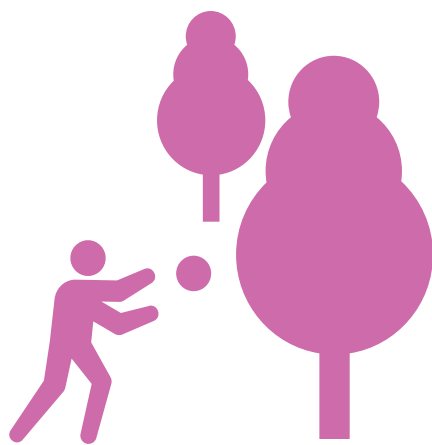
LACK OF TRANSPORTATION OPTIONS AFFECT ACCESS TO:



ACCESS TO FOOD
19.5% residents cited "difficulty getting to the store" as the reason for not having enough food at home.



ACCESS TO JOBS
29% residents cited "transportation to/from the job" will be helpful to advance their career.



ACCESS TO RECREATION
31% residents cited "transportation" as the reason for children in their household not participating in recreational and social activities.

WHAT DO YOU THINK ARE WESTSIDE'S BIGGEST CHALLENGES?

42% West Bluff residents cited Public transportation options

Access to transit is a top priority especially for residents without children who are 20% less likely to own a car than residents with children.

GOAL 5: YOUTH RECREATION

Increase programs and recreational opportunities for younger children and teens in the Westside neighborhood.

- 1 Consider park and open space enhancements and activation (e.g., skate park, futsal court at Gage Park, trail access to Gage and Observation parks)

WHAT WE'VE HEARD SO FAR..

WHAT SORT OF SOCIAL ACTIVITIES DO YOU FEEL ARE MISSING IN WESTSIDE?



GOAL 6: PARK ACCESSIBILITY

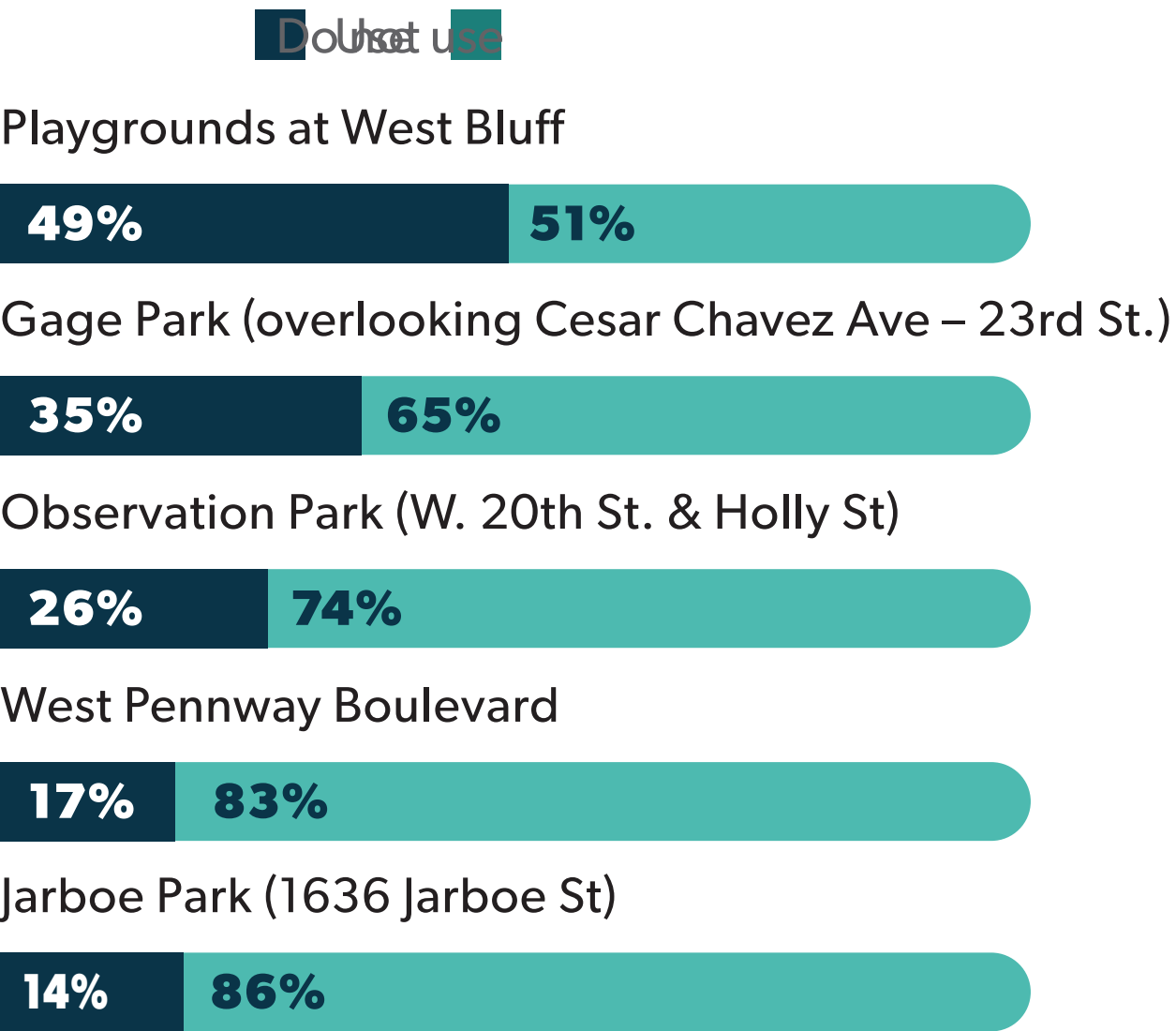
Improve accessibility to parks, open spaces and recreation centers for all age groups and abilities through well-lit walking and bicycle trails.

- 1

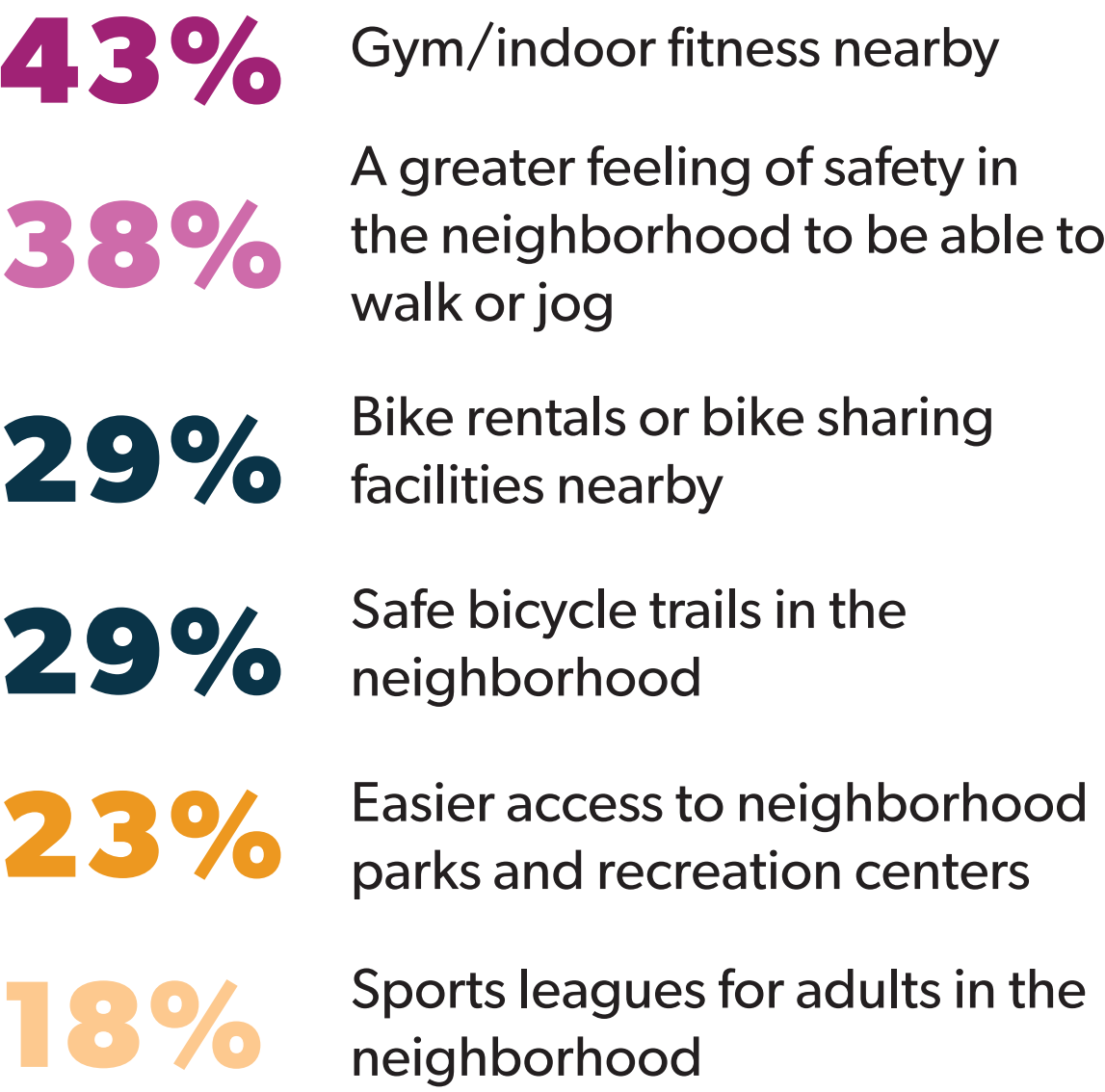
Add bike facilities throughout Westside (e.g., bike racks, protected bike lanes, signage, routes planning).

WHAT WE'VE HEARD SO FAR..

USAGE OF PARKS:



WHAT WOULD MAKE IT EASIER FOR YOU AND YOUR FAMILY TO EXERCISE IN THE NEIGHBORHOOD?



GOAL 7: PEDESTRIAN SAFETY

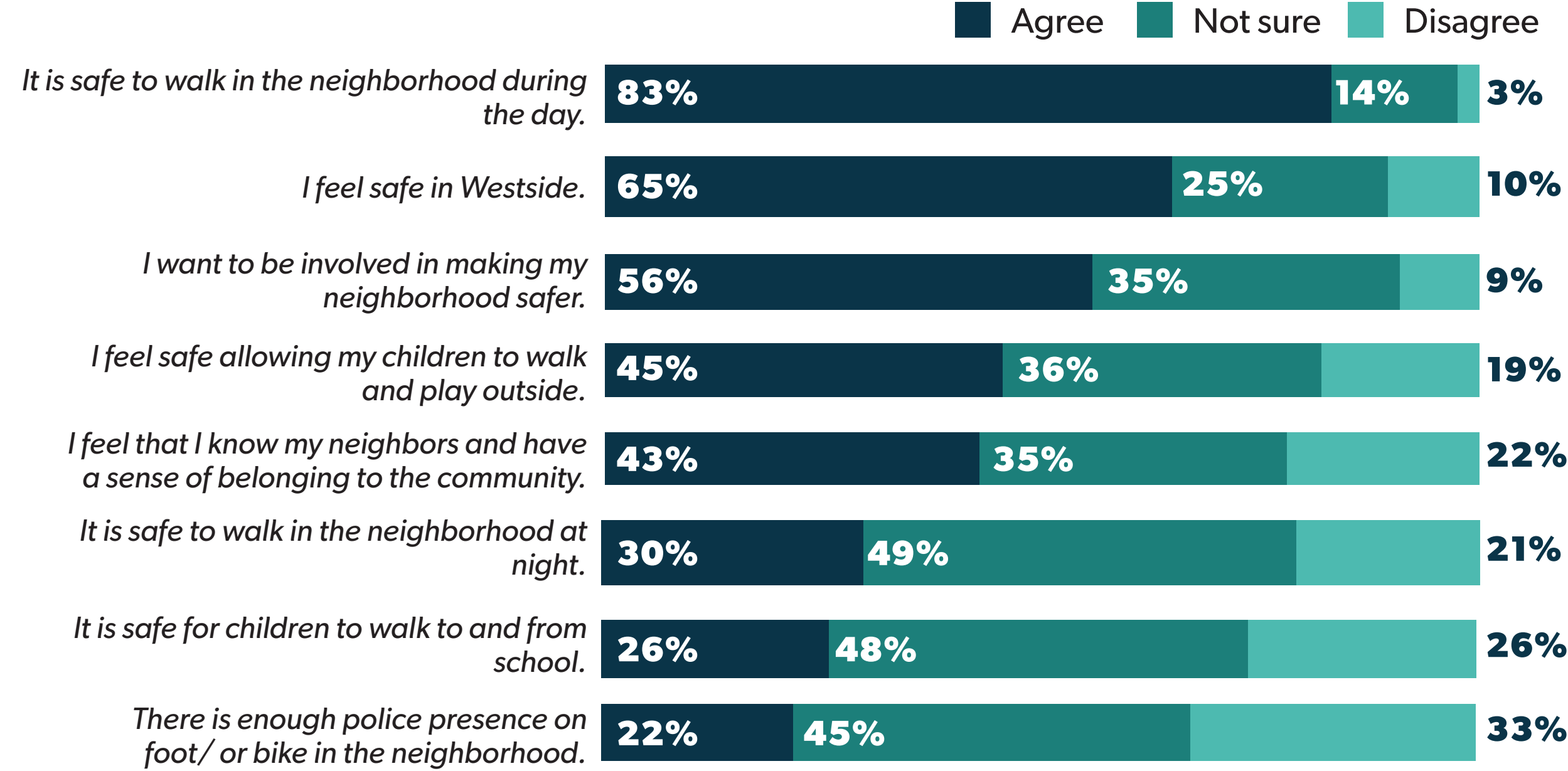
Foster a safe, accessible neighborhood during the day and night.

- 1 Improve street lighting and feeling of safety in areas of concern
- 2 Continue to plan for an implement traffic calming and vehicular safety improvements improving mobility for all users and safety across the Westside

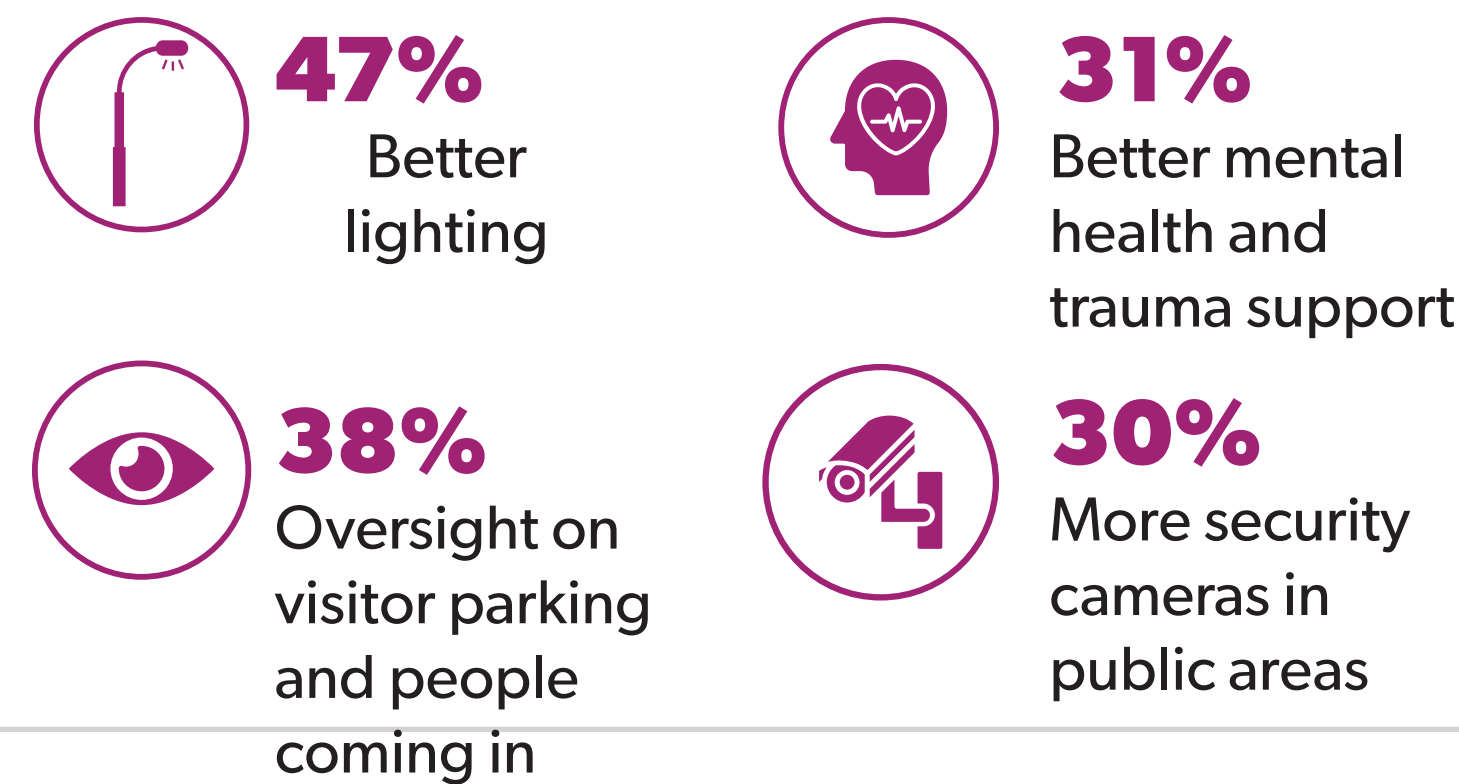
83% households agreed that they felt safe to walk in the neighborhood during the day, while only 30% agreed to feeling safe at night.

WHAT WE'VE HEARD SO FAR....

HOW DO YOU FEEL ABOUT SAFETY IN WESTSIDE?



WHAT WOULD MAKE THE NEIGHBORHOOD SAFER TO YOU?



WESTSIDE CHOICE

NEIGHBORHOOD
TASK FORCE
UPDATE

1.16.2025

